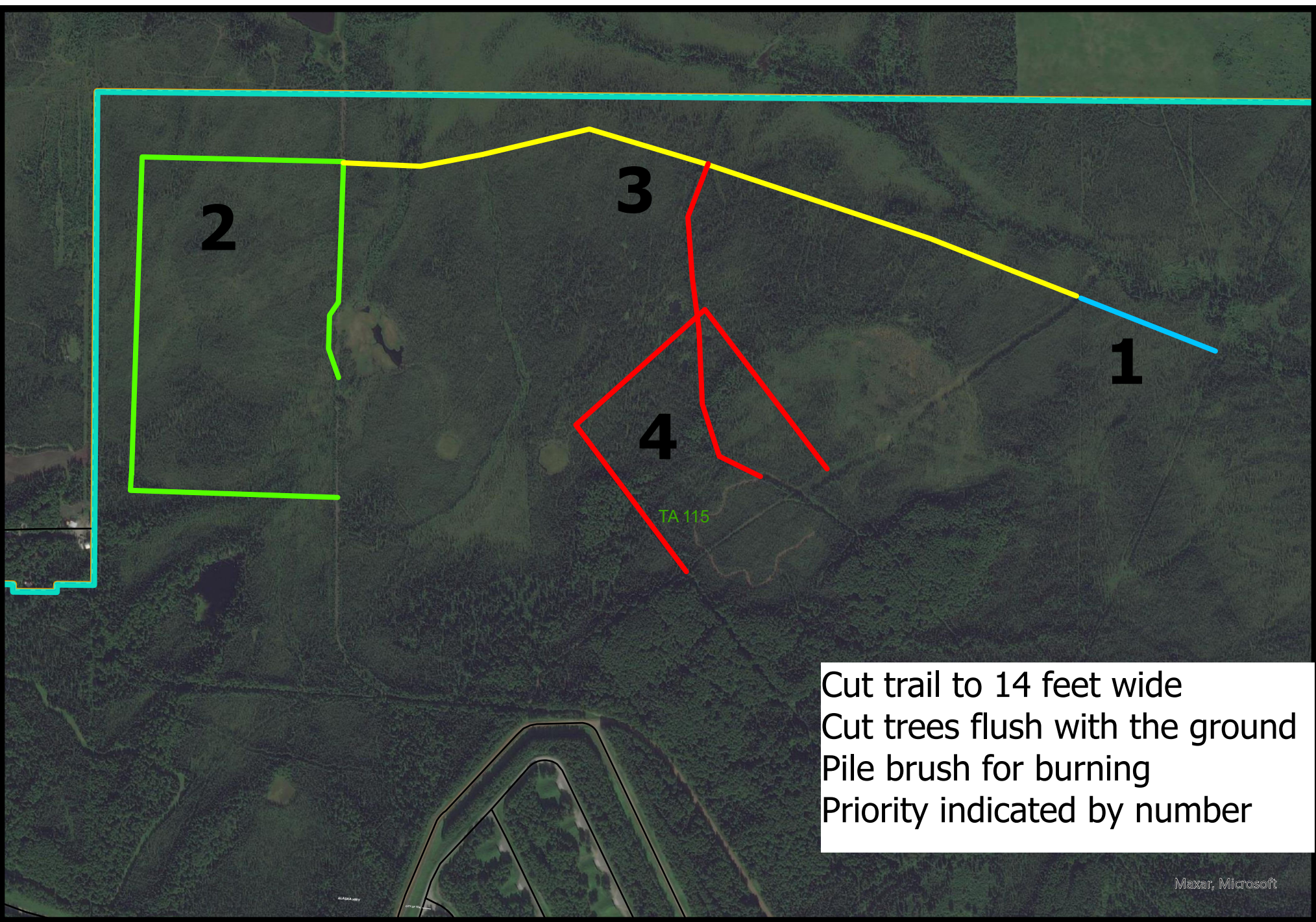


Path: Z:\Conservation\Natural Resources\User Folders\Rees\Dan\Project\AFS Lines 2024\AFS Lines 2024.aprx



Cut trail to 14 feet wide  
 Cut trees flush with the ground  
 Pile brush for burning  
 Priority indicated by number

Maxar, Microsoft



**AFS Line Priority TA 115**  
**FORT WAINWRIGHT, ALASKA**  
**2024**



Department of Public Works  
 Environmental Division  
 BLDG 3023  
 Fort Wainwright, Alaska

- Roads
- ▭ Training Area
- ▭ Installation Boundaries
- AFS\_line\_1
- AFS\_Line\_2
- AFS\_Line\_3
- AFS\_Line\_4

